

MANUAL — MLR010004N

# **Mueller**

## **SINGLE SERVE COFFEE MAKER**

COMPACT AND FAST



# IMPORTANT SAFETY INSTRUCTIONS

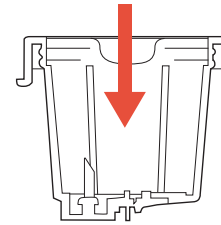
Please read this instruction manual and the Safety Instructions before operating this appliance!

## **⚠ IMPORTANT!**

You may find some water remaining in the appliance. To ensure that this appliance works perfectly, it was tested using water before leaving the factory.

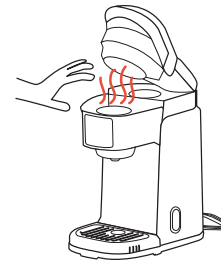
When using electrical appliances, basic safety precautions should always be followed to reduce the risk of fire, electric shock, and/or injury to persons, including the following:

- Do not touch hot surfaces. Use handles and knobs when available. Scalding may occur if the Coffee Maker is moved or opened or Capsule Holder is disturbed during brewing cycles.
- Do not place on or near a hot gas or electric burner or in a heated oven.
- For indoor use only.
- To protect against fire, electric shock, and injury, do not immerse cords, plugs or the appliance in water or any other liquid.
- Use only water in this appliance! Do not put any other liquids or foods in the Water Reservoir.
- Unplug power cord when not in use and before cleaning. Allow to cool down before putting on or taking off parts, and before cleaning the appliance.
- Do not operate any appliance with a damaged cord or plug or after the appliance malfunctions or is damaged in any manner. Contact Mueller Customer Service to arrange for replacement or repair.
- Do not let the cord hang over the edge of a table or counter, or touch any hot surfaces.
- Always grasp the power plug to remove it from the wall outlet. Do not pull on the power cord itself.
- This appliance is not intended for use by persons (including children) with reduced physical, sensory or mental capabilities, or lack of experience and knowledge unless they have been given supervision or instruction concerning use of the appliance by a person responsible for their safety.
- Do not open the Coffee Maker while brewing is in progress.
- To disconnect, turn the machine off and then remove the plug from a wall outlet.
- Do not open the Brew Head or remove the mug until the "On/Off" button stops flashing.
- Do not use appliance for anything other than its intended use.



## **⚠ CAUTION!**

There are two sharp needles that puncture the capsule, one above the Capsule Holder (located in the Brew Head) and the other at the bottom of the Capsule Holder. To avoid the risk of injury, do not put your fingers in the Capsule Holder.



## **⚠ CAUTION!**

There is extremely hot water/steam in the Capsule Holder during the brewing process. To avoid the risk of injury, do not lift the Handle to open the Brew Head during the brewing process.



**WARNING!**

## **⚠ ELECTRICAL SHOCK HAZARD**

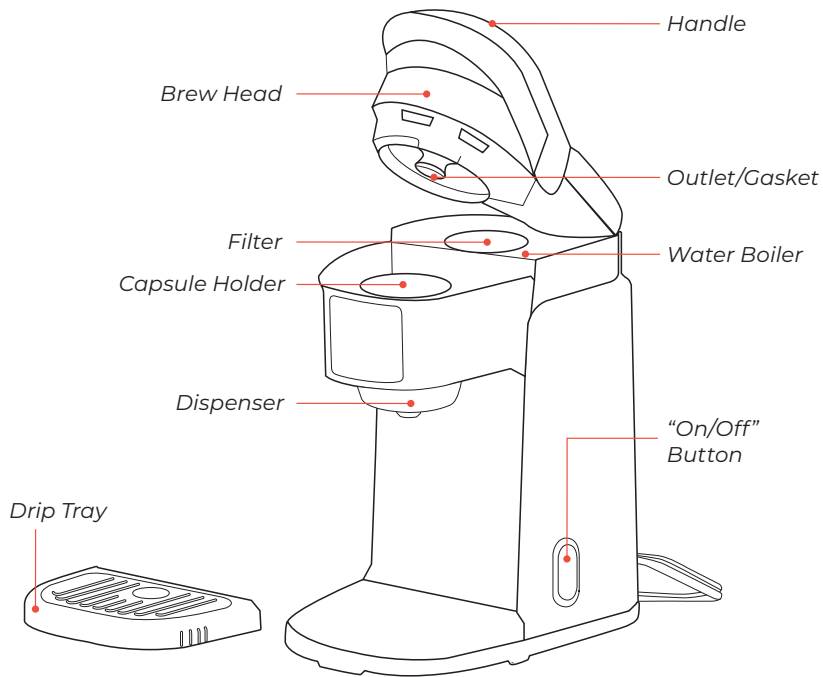
Risk of Fire or Electric Shock. Do not open. No user serviceable parts inside. Repair should be done by authorized service personnel only.

This operating manual cannot cover all possible circumstances. For further information or in case of problems not adequately covered in this operating manual, please contact Mueller Customer Service.

**SAVE THESE INSTRUCTIONS**

**FOR HOUSEHOLD USE ONLY**

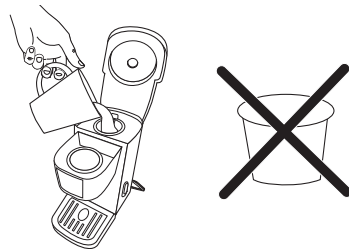
## OVERVIEW OF PARTS



## BEFORE FIRST USE

Before you use your Single Serve Coffee Maker for the first time, perform an initial cleansing brew by running clean water through the brewing cycle without using a capsule.

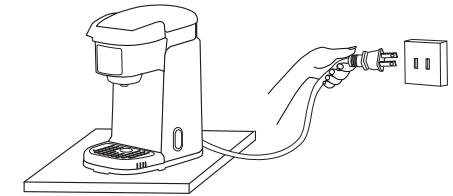
Add a mug on the Drip Tray to catch the cleaning water. Afterwards, dump the water and clean your mug.



**NOTE:** Mug and single use coffee capsules not included.

## HOW TO MAKE COFFEE

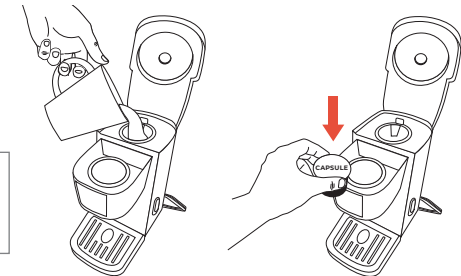
**1** Place the Coffee Maker on a flat surface and plug it into a power outlet.



**2** Lift the Brew Head by pulling on the Handle.



**3** Fill the Water Boiler with the desired amount of water (10 oz maximum) and insert a capsule into the Capsule Holder.



**NOTE:** Do not remove the foil cover or puncture the capsule.

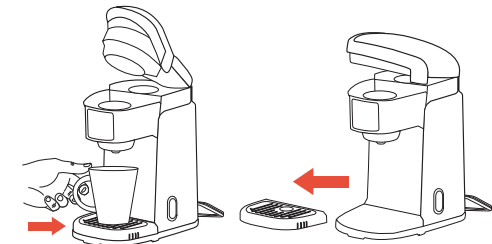
### CAUTION!

Avoid the sharp piercing pins located inside the Brew Head and at the bottom of the Capsule Holder.

**4** Place a mug under the Dispenser on the Drip Tray.

### Brewing into a tall mug (up to 4.1 in)

To brew into a tall mug, simply remove the Drip Tray and place the tall mug underneath the Dispenser.



- 5 Close by pressing down on top of the Handle, making sure it is completely closed. The capsule will be punctured on top and the bottom when closing the Brew Head.



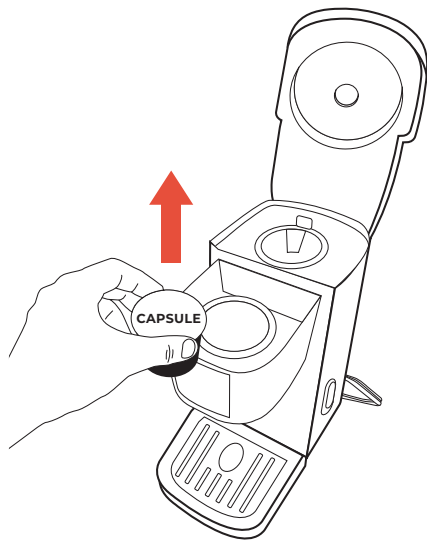
- 6 Press the “On/Off” button to start brewing coffee. During brewing, the “On/Off” button light will flash. The brewing process will take about 3 minutes.

When the brewing is complete, the Coffee Maker will stop automatically and the “On/Off” button light will turn off.



- 7 Prior to opening the Brew Head, always let residual drips/steam evaporate completely from the Dispenser.

- 8 Wait for the Coffee Maker to cool before removing the used capsule as they remain hot after the brewing cycle.



**⚠ CAUTION!**  
To avoid potential scalding, do not lift the Handle while the machine is brewing.

## ■ COFFEE BEST PRACTICES

- The right water makes a difference. For best tasting coffee/tea/cocoa, we recommend using bottled or filtered water.
- Do not use distilled or reverse osmosis water.
- Water quality varies. If you notice an undesirable taste in your coffee (such as chlorine or other mineral taste), we recommend you consider using bottled water or water from a filtration system.
- A clean coffee maker is essential. Regularly clean this appliance using the ► **“Cleaning and Maintenance”** section.
- Do not reuse a capsule since this will significantly reduce the flavor.

## ■ CLEANING AND MAINTENANCE

### De-Scaling

To keep your Coffee Maker looking and performing well, regularly clean the external and internal components. This includes periodic descaling.

Mineral content in water varies from place to place. Depending on the mineral content of the water in your area, calcium deposits or scale may build up in the appliance. Scale is non-toxic, but left unattended, it can hinder Coffee Maker performance. De-scaling the appliance helps maintain the heating element and other internal parts of the Coffee Maker that come in contact with water.

### How to De-Scale the Coffee Maker:

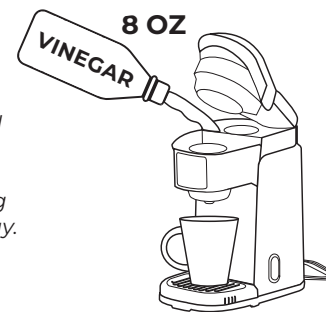
#### ■ STEP 1

Make sure you have at least 8 oz of undiluted white vinegar on hand. You will also need access to a sink and a 10 oz ceramic mug (do not use a paper mug).



#### ■ STEP 2

Fill the Water Boiler with 8 oz of undiluted white vinegar and place a ceramic mug on the Drip Tray.



#### ■ STEP 3

Close the Brew Head and brew into the mug **without adding a capsule.**



#### ■ STEP 4

Press the “On/Off” button to start cleaning. When liquid starts to dispense, press the “On/Off” button again to turn the appliance off. Allow the appliance to sit for at least 30 minutes.



#### ■ STEP 5

After 30 minutes, press the “On/Off” button to complete the brew without a capsule. Empty the contents of the mug into the sink. Be careful as contents may be hot!

#### ■ STEP 6

Finally, the appliance needs to be cleaned with water to remove the descaling solution. Fill the Water Boiler with 8 oz of bottled water, close the Brew Head without adding a capsule, place a mug on the Drip Tray Plate and perform a brew. You may need to perform additional water rinse cycles if you notice any residual taste.

## ■ CLEANING EXTERNAL PARTS

### ⚠ IMPORTANT!

Make sure the Coffee Maker is unplugged before cleaning. Regular cleaning of the Coffee Maker external components is recommended.

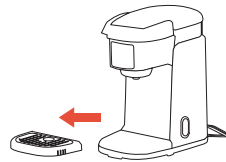
#### Clean Your Coffee Maker Regularly

To keep your Coffee Maker looking and performing its best, be sure to clean the external and internal components on a regular basis.

- Never immerse the appliance in water or other liquids.
- Clean the housing and all external parts with mild soap and a damp, non-abrasive cloth.
- For the warming plate, use a clean, damp cloth. Never use rough, abrasive materials or cleaners to clean the warming plate.

#### Drip Tray

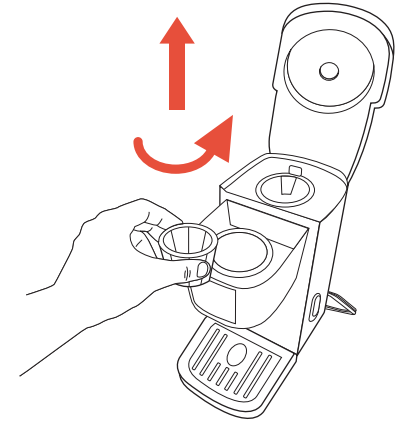
The Drip Tray catches any liquid overflow. Slide the Drip Tray toward you to remove it. To avoid spilling, keep the Drip Tray level. Hand wash the removable Drip Tray with warm, mild soap and water. Allow to dry before reinserting it.



**NOTE:** Empty the Drip Tray before any long-term storage or inactivity.

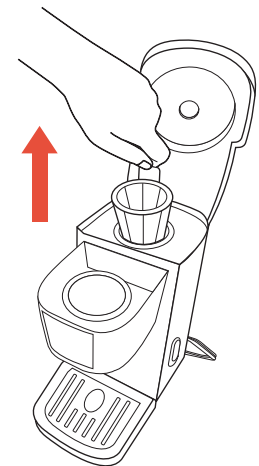
## ■ CLEANING THE CAPSULE HOLDER

- 1 Lift the Handle to open the Coffee Maker.
- 2 Grasp the top of the Capsule Holder. Gently twist counterclockwise to unlock it, then pull straight up for removal.
- 3 Wash the Capsule Holder. It is **top rack dishwasher safe** or wash by hand with mild soap and water.
- 4 Allow the Capsule Holder to dry before reinserting it.
- 5 Reinserting is the reverse of removal. Ensure you align the Capsule Holder rib with the recessed area in the Coffee Maker when you insert it.
- 6 Give a gentle clockwise twist until you hear the Capsule Holder click into its locked position.



## ■ CLEANING THE FILTER

- 1 Remove the Filter basket by grasping its handle and lifting straight up.
- 2 Wash the Filter in warm, soapy water and rinse thoroughly.
- 3 After cleaning, replace the Filter in the Filter holder and press firmly to make sure it closes securely.



## ■ STORAGE

After use, allow some time for the unit to cool before putting it away. Empty the Water Reservoir and the Drip Tray before storing your Coffee Maker.

## ■ TROUBLESHOOTING

Problem	Possible Cause	Solution
Coffee Maker does not have power.	The Coffee Maker is not plugged in securely.	Plug into a different outlet.
Coffee Maker will not brew.	The Brew Head is not closed properly or not closed at all.	Close the Brew Head by pressing firmly down on the Handle.
Brewing a partial mug.	Capsule Holder or the Filter may be clogged.	Remove and clean the Capsule Holder and the Filter if necessary and rinse it under faucet.
	Calcium or scale is built up in the Coffee Maker.	De-scale the Coffee Maker.

## ■ SPECIFICATIONS

Model Number	Voltage	Power	Pump Pressure	Water Tank Capacity
KC-21	120 V~ 60 Hz	800 W	Max 3 Bars	10 oz

This appliance accepts single use capsules only.

## ■ 1-YEAR LIMITED WARRANTY

This product is warranted to be free from defects in material and workmanship under normal use and service for one year from the date of the original purchase with the receipt. The manufacturer's obligation shall be limited to repairing or replacing any part of the product that is defective. Such warranty shall not apply to damages resulting from accidents, abuse, or misuse.

If there is any problem with Mueller Single Serve Coffee Maker, please contact Customer Service.

**MUELLERDIRECT.COM**  
**SUPPORT@MUELLERDIRECT.COM**  
**888-632-9981**



**SINGLE SERVE  
COFFEE MAKER**

COMPACT AND FAST

SKU: MLR010004N

MADE IN CHINA

---

**HAPPINESS IS HOMEMADE**

MUELLERDIRECT.COM  
SUPPORT@MUELLERDIRECT.COM  
888-632-9981

37 E 18TH STREET  
NEW YORK, NY 10003  
UNITED STATES